

Catera All Purpose Salon Styling
Model # MK-303

PARTS LIST

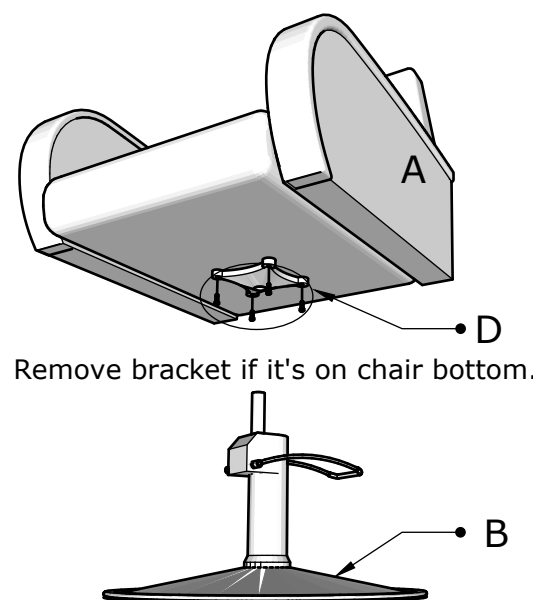
Part	Qty.	Description
A	1	Chair top
B	1	Base and hydraulic
C	1	Footrest bar
D	8	Bolt + washer + lock washer
E	1	Bolt
F	1	Bracket

! ALWAYS KEEP HYDRAULIC BASE UPRIGHT. THE HYDRAULIC SHOULD NOT BE STORED OR TURNED UPSIDE-DOWN !

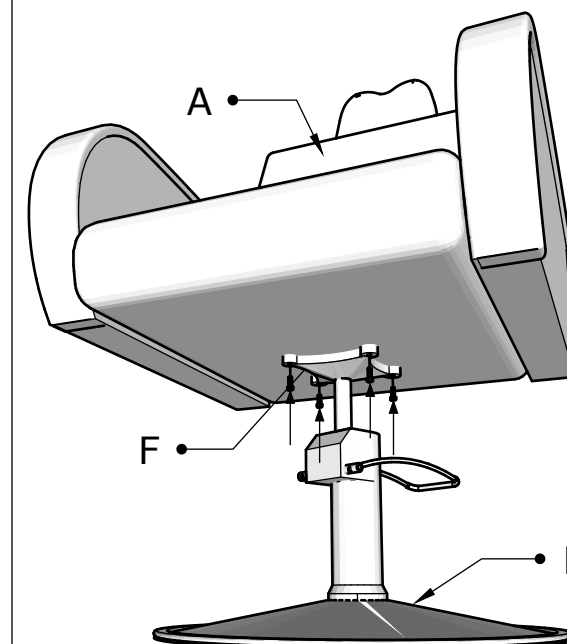
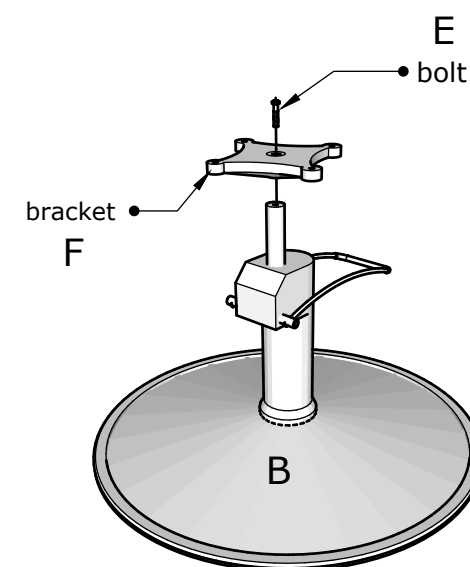
Assembly instructions:

1

The bracket must be bolted to the hydraulic before the chair can be safely attached. The bracket may already come bolted on the hydraulic, but if not, it must be removed from the chair by removing the four bolts. Now remove the bolt from the piston, place the bracket on the piston, and screw the bolt back into the piston through the bracket.



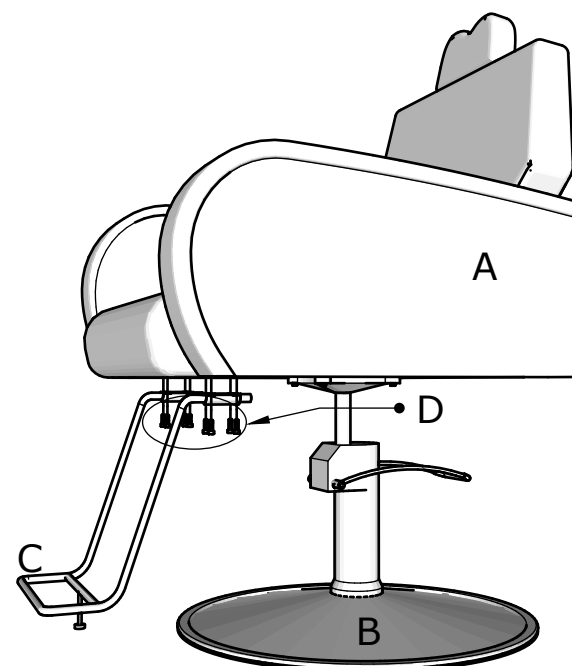
Attach bracket to piston.



Then attach seat to the assembled bracket and hydraulic.

2

Attach the footrest to the chair front using the four remaining bolts and lock washers.



3

Enjoy your new chair.
Remember to always keep the hydraulic upright. Also be sure not to stand solely on the footrest.

It is good to pump the hydraulic to full height and back down several times right after assembly to prime the hydraulic fluid. This will keep the pump smooth and responsive.

Note that short quick pumping is more effective than pressing the lever all the way down each time.

If you have any questions or problems during assembly please call our customer service at 1.888.332.0123

Thanks for choosing Minerva!